

FLO-LINE CORPORATION

171/173, NAGDVEI STREET, 303, SK HOUSE, MUMBAI: 400003 (INDIA)
 TEL: +91-22-23453019. FAX: +91-22-23432440. EMAIL: floincorp@gmail.com

GLV # 800

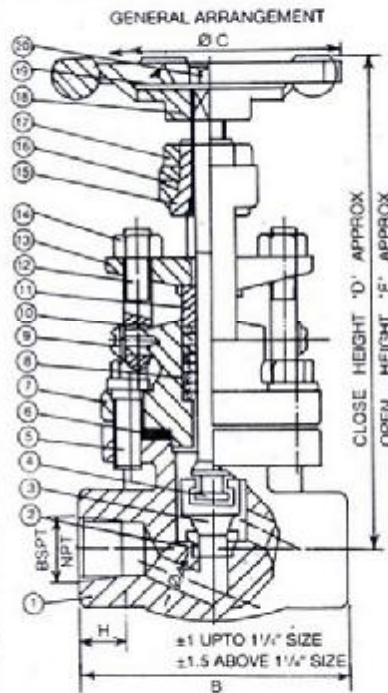


INDUSTRIAL VALVES

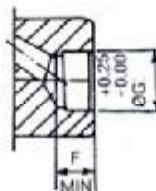
FORGED STEEL GLOBE VALVE - CLASS 800

DATE

REF DRG NO. GLV-17-0650



REPLACEMENT OF PACKING IS POSSIBLE IN FULLY OPEN VALVE



S.NO	DESCRIPTION	QTY	MATERIAL	SPECIFICATION	REMARKS
1	BODY	1	FORGED CARBON STEEL	ASTM-A-105	
2	SEAT RING	1	STAINLESS STEEL	AISI 410	HARDNESS 270-300 HB
3	PLUG	1	STAINLESS STEEL	AISI 410	HARDNESS 350-475 HB
4	SPINDLE	1	STAINLESS STEEL	AISI 410	HARDNESS 220-250 HB
5	COLLAR BOLT, HEX	4	ALLOY STEEL	ASTM A 193 GR B7	
6	GASKET	1	SPIRAL WOUND STAINLESS STEEL WITH ASBESTOS FILLER	AISI 304	
7	BONNET	1	FORGED CARBON STEEL	ASTM A 105	
8	PACKING	AS RECD.	HIGH QUALITY GRAPHITED LUBRICATED ASBESTOS MATERIAL WITH ALLOY WIRE REINFORCEMENT		
9	SET SCREW	2	CARBON STEEL		GALVANISED
10	WASHER	2	CARBON STEEL		GALVANISED
11	GLAND BUSH	1	STAINLESS STEEL	AISI 410	
12	EYE BOLT	2	FORGED STAINLESS STEEL	ASTM A 182 GR F6	
13	GLAND FLANGE	1	FORGED CARBON STEEL	ASTM A 105	
14	EYE BOLT NUT	2	CARBON STEEL		
15	YOKE NUT	1	NI RESIST MODULAR CI	ASTM-A-439 GR D2	
16	GRUB SCREW	1	CARBON STEEL		
17	NUT	1	CARBON STEEL		
18	HAND WHEEL	1	MALLEABLE IRON	IS 2108 GR B	
19	NAME PLATE	1	ANODISED ALUMINIUM		
20	HAND WHEEL NUT	1	CARBON STEEL		

TECHNICAL DATA

DESIGN CODE	APPLICABLE REQUIREMENT	TESTING CODE	END CONNECTION	SOCKET WELD	SCREWED	BUTT WELDING	PRESSURE TEMP. RATING
	BS 5352	IBR	END CONNECTION	SOCKET WELD	SCREWED	BUTT WELDING	PRESSURE TEMP. RATING
	BS 3808						
	API 602			ANSI B.2.1	BS 21		
				IS 554/554 T			
		ANSI B 16.5				ANSI B 16.5	
		BS 5148				API 602	
						BS 2995	

THESE VALVES ARE AVAILABLE WITH FORGED ALLOY STEEL ASTM A192 GR F5 F11 F304 F316 AND TRIMMED SS316 SS304 WITH OR WITHOUT HARD FACING (STELLITE) SEAT

HYDROSTATIC TEST PRESSURE	BODY	3000 PSIG
	SEAT	2200 PSIG
PNEUMATIC TEST	SEAT	80 PSIG
PRIMARY SERVICE		800 PSIG AT 850° F

SIZE	A	B	C	D	E	F	G	H	CODE	APPROX (WT. KG)
6	6.4	85	85	150	156	9.5	14.0	10.2	011 GLV	2.50
10	6.4	85	85	150	156	9.5	17.5	10.2	012 GLV	2.30
15	9.5	85	85	150	156	9.5	21.7	13.5	013 GLV	2.00
20	12.7	92	85	165	167	12.7	27.0	13.8	014 GLV	2.65
25	17.6	101	85	180	190	12.7	33.8	17.3	015 GLV	4.00
40	28.5	127	145	248	255	12.7	48.6	18.3	016 GLV	11.00
50	30.1	140	145	245	255	15.9	61.1	19.2	017 GLV	16.00

All Dimensions in M.M.

CUSTOMER _____
 ORDER NO. _____
 JOB/PROJECT _____

FOR APPROVAL FOR RECORD